

DEVELOPING LEADERS FOR THE 21ST CENTURY

Secondary School & Boarding



SHATTUCK • ST. MARY'S
FOREST CITY
INTERNATIONAL SCHOOL

GO BEYOND THE ARCH





“We believe that every step in education is important; that is why we are committed to providing a strong first step – a unique, high-quality early learning program that will facilitate the growth of capable, competent young learners.”

Meg Brainard,
Middle School Principal



“One of the greatest characteristics of Shattuck-St. Mary’s Forest City International School is the total commitment to developing well-rounded, critical thinkers who are prepared to be the problem-solvers and leaders of tomorrow.”

Joe Lingle,
High School Principal

KEY DEVELOPMENTAL MILESTONES AT AGE 11 – 18



PHYSICAL

Development of strength, endurance, and agility



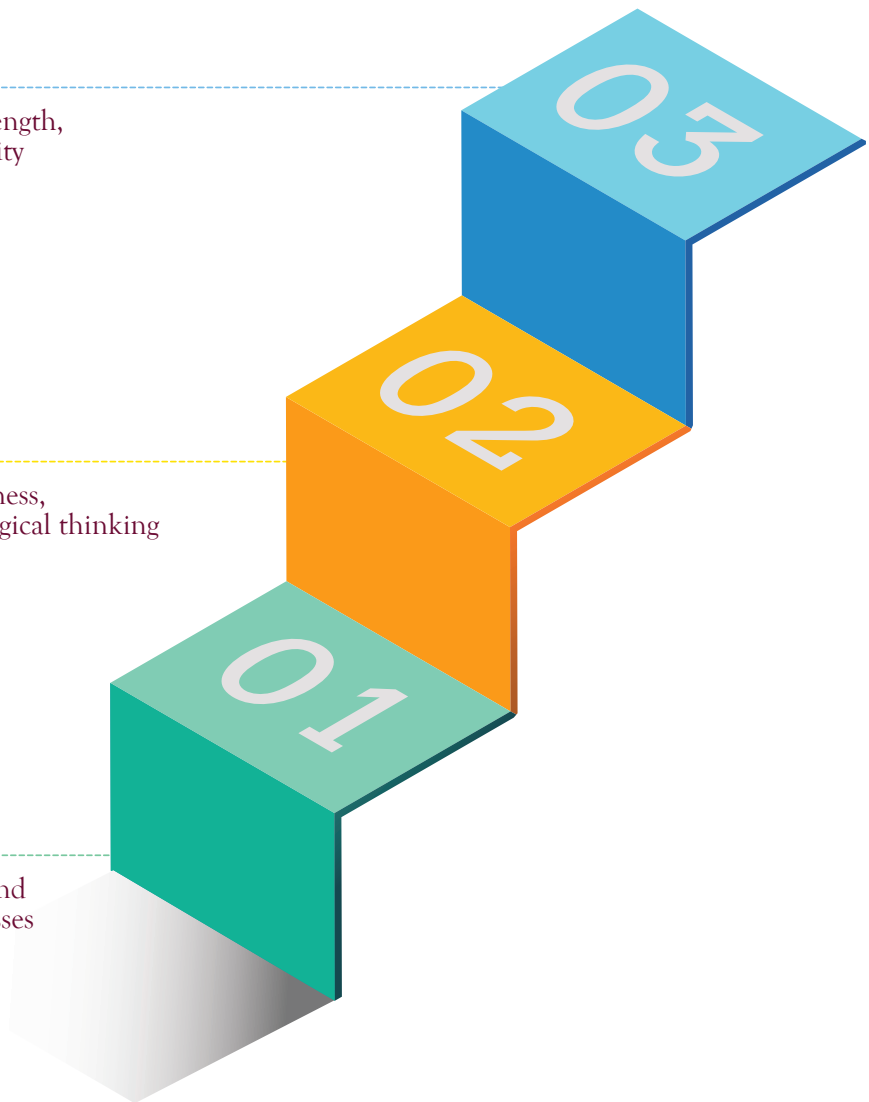
EMOTIONAL

Increase in self-awareness, independence, and logical thinking



SOCIAL

Exploration of new ideas and own strengths and weaknesses



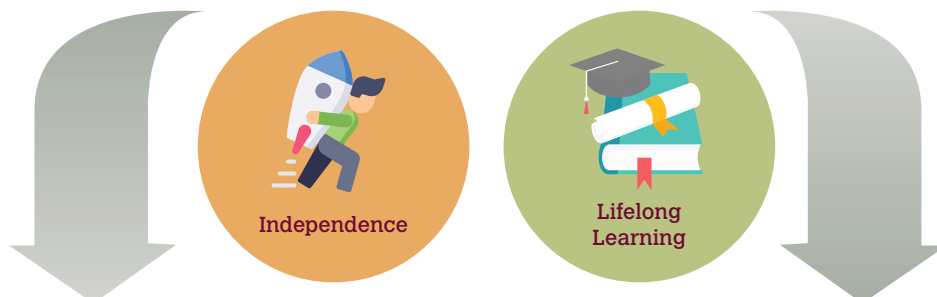
Overview:

The Secondary School prepares students to earn a Shattuck-St. Mary's Forest City High School Diploma upon graduation. Throughout their time at the school, students acquire broad-based knowledge and academic skills. Our teachers uphold high academic expectations as well as building their independence. Students are also encouraged to explore new opportunities in their academic program, activities, and sports. Under the careful guidance of their teachers, they are prepared for success in high school, college, and life.



SECONDARY SCHOOL FEATURES

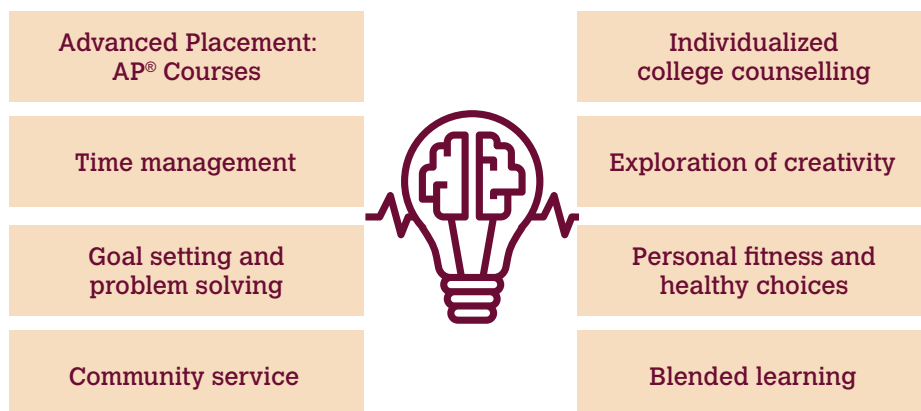
Objectives



Curriculum



Learning Opportunities



CURRICULUM OUTLINE



SOCIAL STUDIES (HISTORY, GEOGRAPHY, ECONOMICS)

By examining events and people from multiple perspectives including the historic, geographic, and economic, the coursework explores common themes that recur across time, place, and history. This approach provides students with the opportunity to explore what is happening in various regions and civilizations at a given time. Also, it enables students to investigate issues and themes from different points of view and to make global connections and linkages that lead to in-depth understanding.



ENGLISH LANGUAGE ARTS

Our teachers guide the students in gaining the solid fundamentals of English grammar while developing their writing skills and reading fluency. A writer's workshop format allows students to learn to think like writers as they develop writing skills. Students will work through the writing process which includes collecting ideas, drafting, editing, and publishing. These strategies and skills are practiced during independent writing time and individual conferences with teachers. In the reader's workshop, students at all reading levels are taught to become more effective readers. The syllabus includes both modern and classical texts that are chosen to inspire a love of literature.



ENGLISH AS AN ADDITIONAL LANGUAGE

Our English as an Additional Language (EAL) program offers a variety of support both within the standard English classroom and in the EAL classroom to nurture the development of English speaking, reading, writing, and listening skills. The EAL program comes with additional tuition fees and placement is determined by our EAL department. Students will need to exit EAL classes before Grade 12 and complete at least one year of mainstream English in order to meet graduation requirements.



VISUAL ART

Visual Art nurtures self-expression and connects students' learning with the world at large. Students are also taught the skill of observation and to envision ideas, expand their perspectives, innovate through exploration, reflect, and self-evaluate. Through group projects, students learn to negotiate with each other, develop creative solutions, and participate as a team member. They learn the value of persistence too.



MATHEMATICS

The goal of the mathematics department is to develop students' mathematical fluency and appreciation. They will become adept at doing math, at reading math, and at communicating math. Students will make frequent presentations of their solutions to mathematical problems to their peers and be able to defend their techniques when questioned.



SCIENCE

The science department offers courses in Biology, Chemistry, Physics, and Environmental Science. Students who seek more academic challenge may take these courses at the AP® Level and earn college credit. Courses are taught with an emphasis on learning by doing in our science laboratories.



SCHOLARSHIFT®

ScholarShift® is an approach to learning for older students that is unique to Shattuck-St. Mary's Schools. This program prepares them for their transition into self-directed learning and to develop the 21st Century skills they will use in college and beyond. ScholarShift® employs a “blended learning” model, whereby the student will attend regular classes on Tuesdays and Thursdays, but on Mondays, Wednesdays, and Fridays, though class is scheduled, they will only meet with their teacher as needed, and have the option of engaging in other academic pursuits through short project-based learning experiences.



BLENDED LEARNING

Blended classes combine the best of traditional classroom instruction with the power of online learning and technology to open up the weekly academic schedule; this innovative class model allows our oldest students time to explore and develop new areas of academic interest, collaborate with peers, and take initiative as they design part of their education through our unique ScholarShift® curriculum.



WORLD LANGUAGES

The World Languages program stresses the development of the four basic skills of listening, reading, writing, and speaking. Authentic materials are implemented to facilitate and engage students in an interactive exploration of a variety of social, cultural, and traditional customs of the representative language they are studying. Students in the EAL program will study English as an Additional Language (EAL) as their World Language. After completion of the EAL program, these students will have the opportunity to study an additional language such as Malay or Mandarin.



weCreate®

weCreate® is a space and philosophy that encourages innovation, creativity, and collaboration. It provides a platform for our students to pursue their individual passions, and includes studios for digital production, fashion design, graphic design, architecture, music editing and recording, robotics, woodwork, electronics, and engineering, in addition to a general craft area.



PHYSICAL EDUCATION/ ATHLETICS

Students will be able to demonstrate competency in a variety of motor skills and movement patterns; apply knowledge of concepts, principles, strategies, and tactics related to movement and performance; demonstrate the knowledge and skills to achieve and maintain a health-enhancing level of physical activity and fitness; exhibit responsible personal and social behavior that respects self and others; and recognize the value of physical activity for health, enjoyment, challenge, self-expression, and/or social interaction.



“Our boarders are supported by a caring team dedicated to making a positive difference in their lives. We work hard to enable them to become the best versions of themselves. We’re ALL IN!”

**Lianne Dominguez,
Director of Residential Life and College
Counseling**

THE BOARDING ADVANTAGE



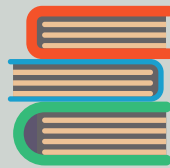
CENTERED ON THE CHILD'S GROWTH & DEVELOPMENT

Boarders benefit from having a vibrant educational environment 24/7, with easier access to teachers and facilities.



RICHER CURRICULA

Boarding schools tend to invest more in their teachers and facilities, ensuring that students are exposed to a wider variety of subjects and activities.



MORE FOCUS ON ACADEMICS AND EXTRA-CURRICULAR ACTIVITIES

With exceptional faculty and facilities at their fingertips, boarders tend to spend more time on both academics and extra-curricular activities.



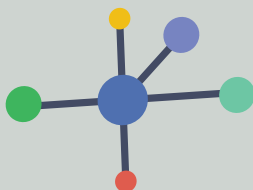
FOSTERS INDEPENDENCE, SELF-DISCIPLINE & ABILITY TO THINK CRITICALLY

Boarders have opportunities to gain life experiences and build exceptional moral character as they learn to become responsible, self-sufficient individuals.



OPPORTUNITIES TO EXPLORE INTERESTS

The dynamic learning environment allows students to fully discover their talents and strengths in a wide range of interests.



SUCCESS-ORIENTED PEER ENVIRONMENT

Being surrounded by academically inclined and like-minded peers encourages boarders to support and intellectually stimulate each other to achieve their full potential.



FEWER DISTRACTIONS

Living at school gives boarders more time and opportunities to focus on special interests, projects, and activities.



OPTIMAL TIME MANAGEMENT

With guidance from their teachers, boarders learn how to use their time wisely.



STRONG SOCIAL SUPPORT NETWORK

The shared communal experiences of boarding school often produce lifelong friendships.

ENRICHING BOARDING EXPERIENCE (inclusive of weekends)

Boarding facilities are available for students in Grade 6-12, giving them the opportunity to cultivate their independence in a safe and nurturing environment, while also equipping them with an opportunity to live and learn in a fully English speaking environment. The dormitory is managed by the teaching faculty. Teachers serve as dorm parents and supervise evening study hours.

Each child is assigned an advisor from the teaching faculty who offers regular academic and social counseling. Students can talk informally with their advisors and seek guidance about things like choosing courses, understanding feedback from other teachers, or applying to college. Parents can log on to the school's academic management system, PowerSchool®, to monitor academic progress and view academic reports and advisor letters.

Everybody is part of one big family here, with fun-filled activities and excursions planned regularly. A highlight is our "Global Cooks" program, where students and teachers get together in the Teaching Kitchen every Saturday to teach or learn a recipe from each other's home country. Everyone enjoys sharing, making, and eating a favorite family meal or holiday treat.



Sample Daily Schedule (Schedules differ)

7:00 – 8:30	Wake up, shower, dress, breakfast in canteen, gather books for class
8:30 – 9:55	Math class
10:05 – 11:30	Science class
11:40 – 12:20	Lunch
12:30 – 1:55	PE
2:05 – 3:40	English/Social Studies
4:00 – 5:00	Drama/Art/Sports
5:30 – 6:30	Dinner
6:30 – 7:00	Community meeting
7:00 – 8:30	Study Hall
10:00	Lights out



KEY BENEFITS



Safe & comfortable environment



Weekly trips & excursions to explore Malaysia



Dedicated dorm parents



Diverse cultural community



Full-time immersion learning



Development of independence and life skills



PowerSchool® online academic management system



Unique weekly Global Cooks program to facilitate a better understanding of global cultures and perspectives



Meal choices include Asian, Western and Vegetarian

DYNAMIC LEARNING ENVIRONMENT

At Shattuck-St. Mary's Forest City International School, we provide the best possible learning environment to inspire, engage, and enrich your child. A purpose-built campus featuring a wide range of outstanding facilities offers the ideal avenue to encourage their academic, artistic, and athletic abilities.



Our **ACADEMIC BLOCKS** encompass smart classrooms, providing the necessary tools for your child to thrive in the 21st Century.



A hallmark two-story **weCreate®** Center provides an innovative space for students in all grades to explore their interests in diverse areas, including engineering and robotics.



In encouraging a well-rounded education, the school offers cutting-edge sports facilities, including an **OLYMPIC-SIZED POOL**.



There are dedicated **SCIENCE LABORATORIES** for each of the school's divisions.



The school features a full-sized indoor **BASKETBALL COURT**.



The well-equipped **FITNESS CENTER** ensures students lead an active lifestyle to keep their minds and bodies healthy.



The school's **THEATER** has seating for over 800 people and provides a place for performances and Community Meetings as well as a creative outlet for students to develop performance and presentation skills.



The full-sized **SOCCER FIELD** offers opportunities for plenty of sporting activities outdoors.



Comprehensive **LIBRARIES** help the children cultivate good reading habits and develop their research skills.

HOW TO APPLY



Step 1

DOCUMENTS REQUIRED:

- Download the Application for Admission form from the school website: ssm-fc.org
- Submit the completed Application for Admission form and required documents by email to info@ssm-fc.org



Step 2

PAYMENT & ASSESSMENTS:

- Application Fee – MYR1,075 payment may be made in cash or by credit card at the school office or by bank transfer. The Application Fee is non-refundable.
- Assessments
 1. Interview with Principal (arranged by the Admissions office). For applicants who are not able to visit the school, a video conference interview will be arranged.
 2. Complete writing and mathematics admission tests.
 3. Applicants who have not previously been attending schools where English is the language of instruction may be required to complete an English Language test.



Step 3

ACCEPTANCE OF OFFER:

- The Admissions Office sends the student a letter offering admission.
- The student and parents sign the Enrollment Contract and return it to the Admission Office.
- Payment of the Enrollment Deposit secures a place in the school.



Download Application

<https://www.ssm-fc.org/admissions/application-forms/>

Forest City Campus

Jalan Forest City 8, Pulau Satu, 81550 Gelang Patah, Johor, Malaysia

+6019-590 3128 info@ssm-fc.org +6019-730 2021

    Shattuck-St. Mary's Forest City International School

WORLD-CLASS LOCATION

Shattuck-St. Mary's Forest City International School is nestled in the futuristic Forest City, the largest green city in South East Asia. This eco-city, which spans across four islands, is located in Johor, Malaysia, a flourishing education hub in the region.



“At Shattuck-St. Mary's Forest City International School, we empower our students to become leaders. We help them find their passions so that they can define their own paths in education and in life.”

Gregg Maloberti
Head of Shattuck-St. Mary's Forest City International School

www.ssm-fc.org